



COMPASS DECOR



COMPASS DECOR

SHANDONG COMPASS DECOR MATERIAL CO.,LTD

Add: Rm1103, A10Building,Lushang Center,Guangzhou Road,
Lanshan District,Linyi City,Shandong Province,China
Tel: +86-539-7977830 Fax: +86-539-7977830
Whatsapp: +8618953955575 Wechat: +8618953955575
Email: angela@wpcspc.com Http: www.wpcspc.com



PRODUCT CATALOGUE

LVT Flooring | SPC Flooring | WPC Wall Panel

2023-2025



● OFFICE



● LVT FLOORING/SPC FLOORING PRODUCTION LINE



● LVT FLOORING/SPC FLOORING PRODUCTION LINE



● Sample room



Shandong Compass Decor Material Co.,Ltd is a company that focuses on the research, development and production of all kinds of fashionable,latest and best-selling decoration materials. Our main products: SPC flooring,LVT flooring,WPC wall panel, PVC ceiling panel,PVC marble sheet,related accessories and so on, We export to 120 countries including the United States, Saudi Arabia, Malaysia, Indonesia, the Philippines, Vietnam, Thailand, Australia, Brazil, Mexico, Italy, the Netherlands, Belgium, the United Kingdom, etc.Excellent product quality and perfect pre-sales and after-sales service system make our products well received by customers all over the world.We have many years of export experience and are well-known in the industry,we are located in Linyi city , Shandong province. Qingdao port is very near by Linyi ,we with convenient transportation access .

Since its establishment, the company has always adhered to the business principle of customer first, reputation first, quality-oriented and service first, constantly developing new materials, We use world-class machines to produce our products,innovating design and improving the quality management system, which can provide customers with all-round solutions and provide OEM,ODM services. Our 20 person sales team is well-trained, experienced and responsive. We warmly welcome customers at home and abroad to visit and negotiate for win-win cooperation

Your trusting is our biggest power to go ahead", we're always here wait for serving for you.We sincerely invite you to work with us together, trusting and being trusted, We build your dream and make it better.

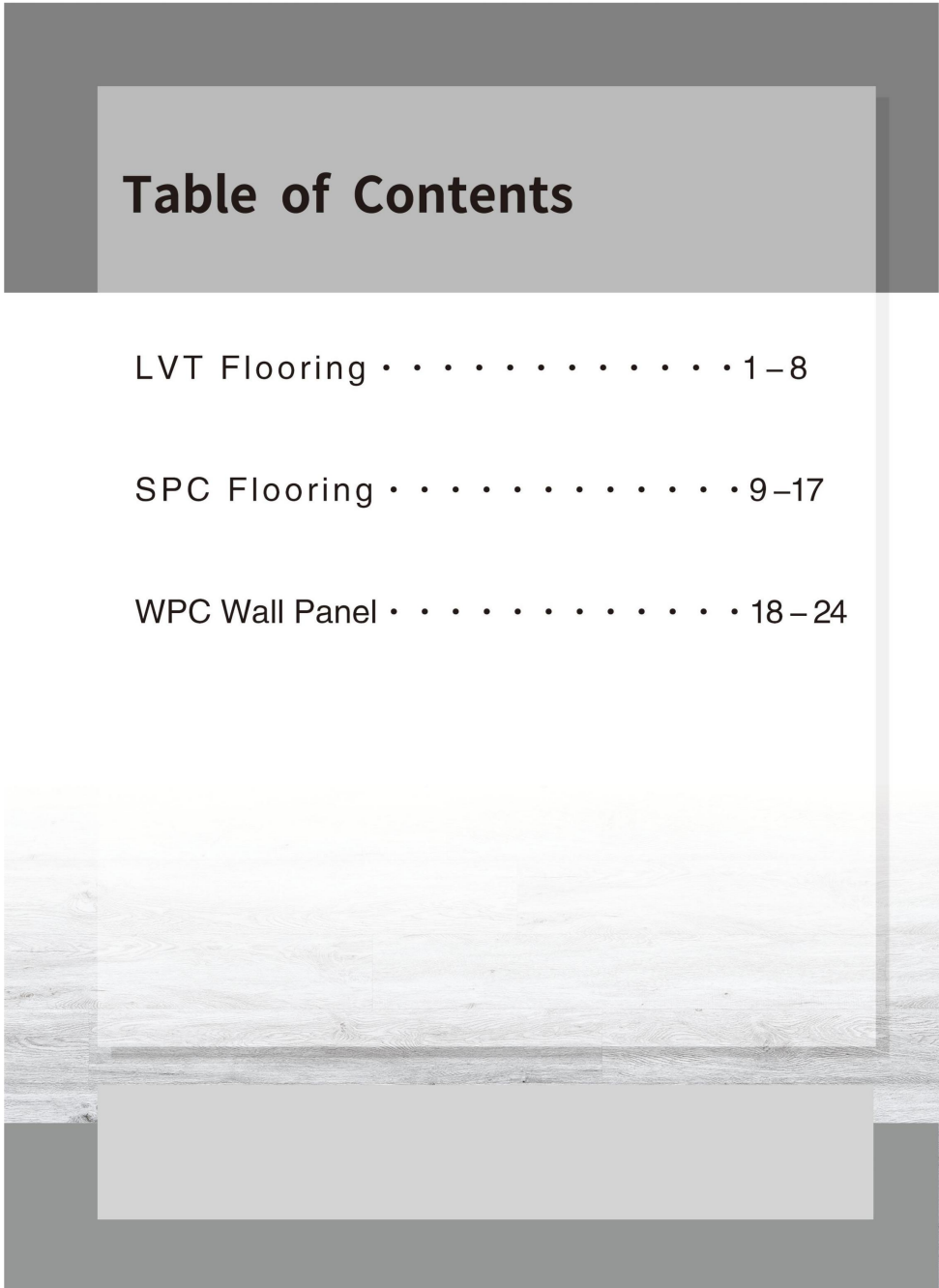


Table of Contents

LVT Flooring 1-8

SPC Flooring 9-17

WPC Wall Panel 18-24





LVT Flooring

LVT FLOORING

Wood grain: 6''*36'' (152.4*914.4mm) 7''*48'' (177.8*1219.2mm) 9''*48'' (228.6*1219.2mm)
Stone grain: 12''*24'' (304.8*609.6mm) 18''*18'' (457.2*457.2mm) Carpet grain: 18''*18'' (457.2*457.2mm)
wear layer: 0.07—0.7mm Thickness : 1.5—5.0mm



CSF-21001



CSF-21002



CSF-21003



CSF-21004



CSF-21005



CSF-21006



CSF-21007



CSF-21008



CSF-21009



CSF-21010



CSF-21011



CSF-21012



CSF-21012A



CSF-21013



CSF-21014



CSF-21015



CSF-21016



CSF-21017



CSF-21018



CSF-21019



CSF-21020



CSF-21021



CSF-21022



CSF-21023



CSF-21023A



CSF-21024



CSF-21025



CSF-21026



CSF-21027



CSF-21028



CSF-21029



CSF-21030



CSF-21031



CSF-21032



CSF-21033



CSF-21034



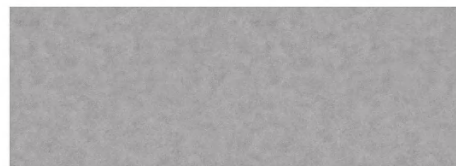
CSF-21035



CSF-21036



CSF-21037



CSF-22001



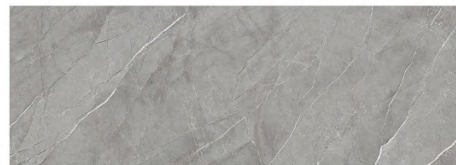
CSF-22002



CSF-21038



CSF-21039



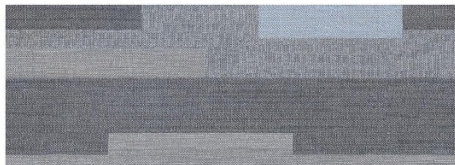
CSF-22003



CSF-23001



CSF-23002



CSF-23003



CSF-23004



CSF-23005



CSF-21040



CSF-21041



CSF-22004



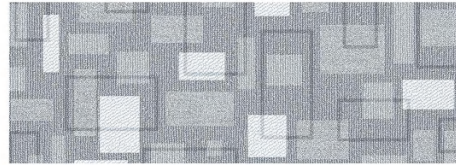
CSF-22005



CSF-21042



CSF-23006



CSF-23007



CSF-23008



CSF-22006



SPC Flooring

- The raw material of stone plastic floor

SPC flooring is made of poly materials, shaped by the processing of extrud-ing, stable dimension, with weater-proof performance.

With specialized UV coating treatment, its stain-resistance, antibacterial and water-proof is highly enhanced, and fireproofing grade can even reach ENclass Bf1.

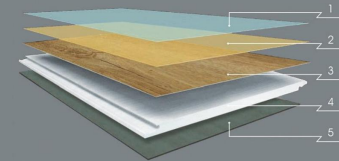
Patented wear layer technology keeps flooring decor film looking newer& longer by resisting everyday scratches; itsdurable and anti-abrasion can be over 6000 revolutions of EN Standard.

Authentic decor film is highly scanning of the texture of natural wood and cool stone, presenting its exclusive textures.

Stone plastic floor structure

- 1.UV Coating
- 2.Wear Layer
- 3.Decorative Layer

- 4.Stone Plastic Composite
- 5.IXPE Damping Layer



- The advantage of stone plastic floor

SPC flooring environmental performance is much better than thatofflimate flooring,o formaldehyde emission; its material is recyclableand environment. SPC flooring provides superior water & erosionresistance let you installespecially in high moisture areas, includingbathrooms, kitchens, basement and laundry rooms, it is idealchoices for residential use. it is fire retardant and with high heat re-sistance compared with solid wood or laminated flooring.



Unilin Click Installation



Adopting UNILIN locking system, Lianyi flooring installation is easier and faster, flooring planks lay together without glue. Tight& even interlock technology avoids crash of edges and water leakage, protects for a lifetime of beauty. 4-side beveled edges are available to enhance three-dimensional feel and increase its realistic texture.

SPC FLOORING

Wood grain/Stone grain/Carpet grain: 1220*182mm 1230*183mm 915*183mm 600*300mm
 wear layer: 0.07—0.7mm Thickness : 3.5—8.0mm



CSF-31001



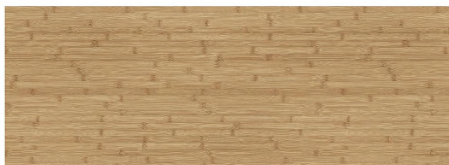
CSF-31002



CSF-31003



CSF-31004



CSF-31005



CSF-31006



CSF-31007



CSF-31008



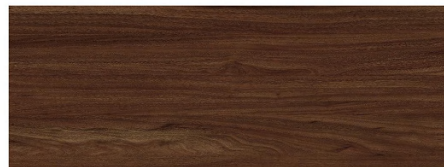
CSF-31009



CSF-31010



CSF-31011



CSF-31012



CSF-31013



CSF-31014



CSF-31015



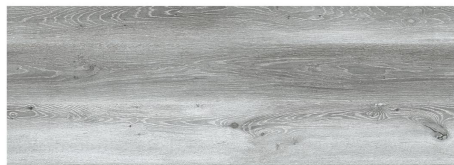
CSF-31016



CSF-31017



CSF-31018



CSF-31021



CSF-31020



CSF-31021



CSF-31022



CSF-31023



CSF-31024



CSF-31025



CSF-31026



CSF-31027



CSF-31028



CSF-31029



CSF-31030



CSF-31031



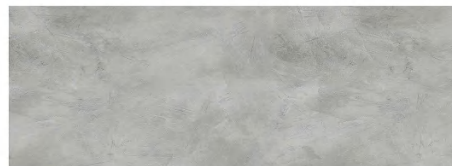
CSF-31032



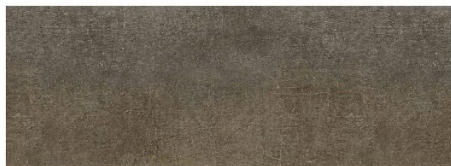
CSF-31033



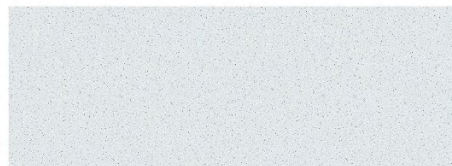
CSF-31034



CSF-32001



CSF-32002



CSF-32003



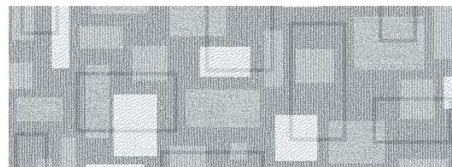
CSF-32004



CSF-32005



CSF-32006



CSF-33001



CSF-33002



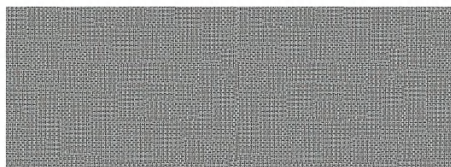
CSF-33003



CSF-33004



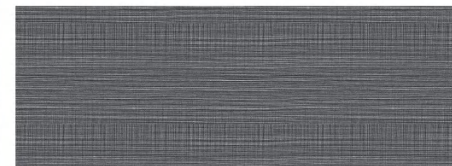
CSF-33005



CSF-33006



CSF-33007



CSF-33008



CSF-33009



CSF-33010



CSF-32007



CSF-31035



CSF-31036



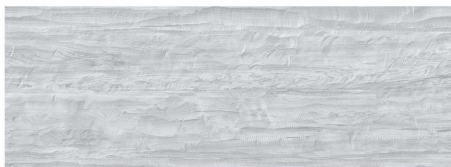
CSF-31037



CSF-31038



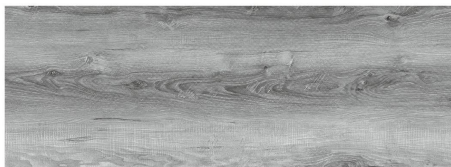
CSF-31039



CSF-31040



CSF-31041



CSF-31042



CSF-31043



CSF-31044



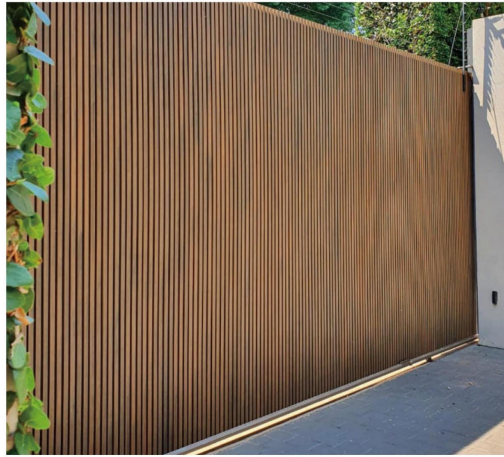
CSF-31045



CSF-31046

WPC Wall Panel

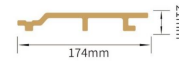




Co-extrusion Outdoor Wall Panel



CSW-17421



CSW-21926



PE Co-extrusion Wall Panel



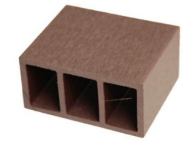
70*11MM



145*10MM



120*120MM/150*150MM

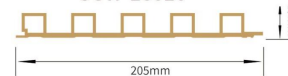


100*50MM/150*75MM

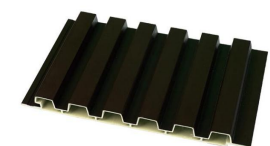
Guardrail



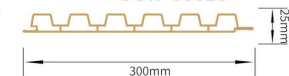
CSW-20520



CSW-13518



CSW-30025





WPC Wall Panel



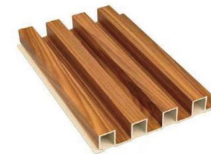
CSW-15509
155mm
9mm



CSW-15508A
155mm
8mm



CSW-15912
159mm
12mm



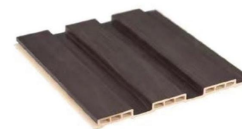
CSW-16525
165mm
25mm



CSW-15923
159mm
23mm



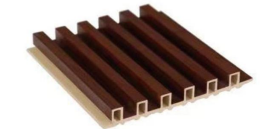
CSW-20512
205mm
23mm



CSW-20515A
165mm
25mm



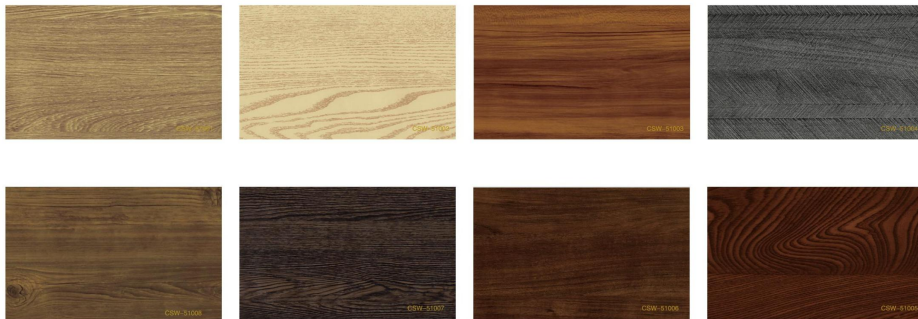
CSW-21020
159mm
23mm



CSW-17020
205mm
23mm



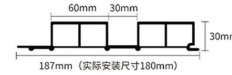
Optional Colors



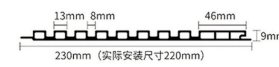
WPC Wall Panel



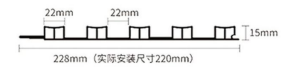
CSW-18730



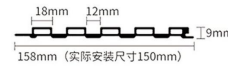
CSW-23009



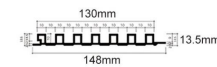
CSW-22815



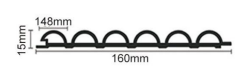
CSW-15809A



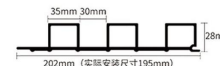
CSW-148135



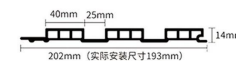
CSW-16015



CSW-20228B



CSW-20214C



CSW-20215A

